

# Self-managed super funds

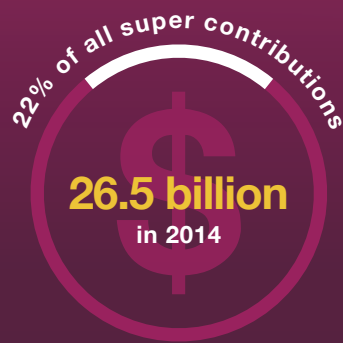
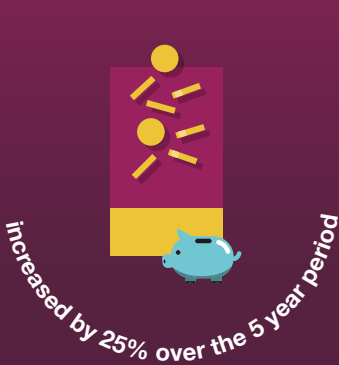
## annual statistics overview

### HIGH LEVEL STATS

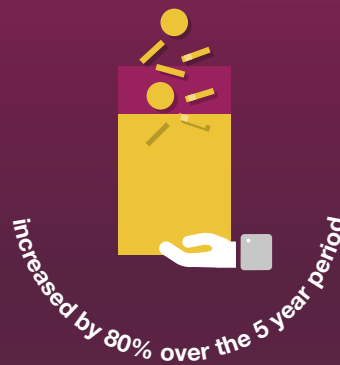


### INS & OUTS

#### SMSF contributions:



#### SMSF benefit payments:



### LET'S TALK ABOUT SMSFS



Over the five years to 2014, there was a shift of SMSFs moving into the pension phase (8%)



### FOR THE FIRST TIME



For the first time in 2014 the average assets per fund exceeded **\$1 million.**



**78%** of all SMSFs at June 2015 had individual trustees.